

Get in touch with us!

KAN

Commission for Occupational Health
and Safety and Standardization
Secretariat

Alte Heerstrasse 111
D-53757 Sankt Augustin

Tel.: +49 2241 231 03
Fax: +49 2241 231 3464

Brussels office

Commission for Occupational Health
and Safety and Standardization
Maison Européenne de la
Protection Sociale
Rue d'Arlon n° 50
B-1000 Bruxelles

Tel.: +32 2 280 68 85
Fax: +32 2 230 77 73

E-mail: info@kan.de

www.kan.de



How to find KAN ... in Sankt Augustin

By rail:

From Bonn central station or Siegburg station (ICE): take underground/suburban Line 66 (Bonn-Siegburg) to Hangelar-Ost (20 minutes from Bonn, 10 minutes from Siegburg). From there it is a ten-minute walk.

By air, arriving at Cologne-Bonn airport (CGN):

- Take the S 13 train to Porz-Wahn (1 stop, 3 minutes), then take the S 12 train to Siegburg (8 minutes), continue with Line 66 (see above); *alternatively*:
- take the airport bus (Line 670) to Bonn central station (35 minutes), continue with Line 66 (see above); *alternatively*:
- by taxi, approximately 20 minutes.

By air, arriving at Frankfurt or Düsseldorf airports:

Take the ICE to Siegburg, then continue as described above under "By rail".

By road:

Approaching from the north: leave the A 59 (airport spur) at the Beuel-Hangelar exit. Turn right onto the B 56, signed "Siegburg/Sankt Augustin-Hangelar". After 2.8 km, turn right into the Alte Heerstrasse (signed "HVBG"). Turn left after another 0.6 km (entrance gate to the HVBG).

Approaching from the west: from the Bonn-Nord junction on the A 565, cross the Friedrich-Ebert-Brücke bridge and continue to the Bonn-Beuel junction; there, take the A 59, signed "Königswinter". Leave the A 59 at the first exit signed "Beuel-Hangelar", then continue as described above.

Approaching from the south: on the A 3 motorway (Frankfurt-Cologne), take the A 560 signed for Bonn at the Bonn/Siegburg motorway junction. Leave the A 560 immediately at the first exit (Niederpleis). Turn right, following the signs for Niederpleis. At the traffic lights about 1.1 km after the "Niederpleis" place-name sign, turn left into Alte Heerstrasse (signed "HVBG"). After another 1.7 km, turn right into the HVBG entrance.



General plan and detailed plan of St. Augustin



... in Brussels

By rail:

At **Gare du Midi** (the Thalys station), take Metro Line 2 towards Simonis. Get out at Troon/Trône and walk along Rue du Luxembourg to Place du Luxembourg (roundabout and station). Then turn left into Rue d'Arlon. KAN is situated in the Maison Européenne de la Protection Sociale, about 20 m down the road on the left-hand side (No. 50, 3rd floor).

At **Gare Centrale** station, take Metro Line 1A towards Herrmann-Debroux. Get out at the next station (Troon/Trône). Continue from there as described above.

By air:

The airport has its own station with a direct line to the Gare Centrale. From there, see "By rail".

By car:

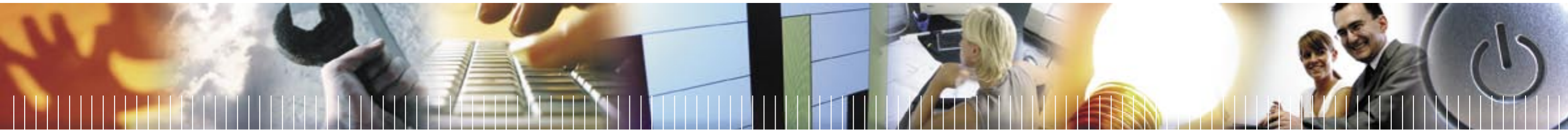
At the Place Schuman roundabout, turn into Rue de la Loi. Get into the far left-hand lane and about 200 metres further on, take the first turning on the left (Rue de Trèves). Carry straight on to Place du Luxembourg (roundabout and "Quartier Leopold" railway station). Enter the roundabout and take the first exit (Rue d'Arlon). KAN is situated in the Maison Européenne de la Protection Sociale, about 20 m down the road on the left-hand side (No. 50, 3rd floor).

Presenting: KAN



Detailed plan of Brussels

KAN Kommission
Arbeitsschutz
und Normung



What is KAN's mission?



The objective of KAN, the Commission for Occupational Health and Safety and Standardization, is that of ensuring that the greatest possible attention is devoted to OH&S in German, European and international standardization processes.

Through its activities, KAN promotes the effective prevention of accidents and occupational diseases, thus assuring a high standard of protection in the working environment, and in turn greater workplace safety.

The goal actively pursued by KAN is for the essential health and safety requirements of European product directives to be adequately supported by harmonized standards. However, it also ensures that standards do not contain provisions governing issues which are properly the mandate of the state or the institutions for statutory accident insurance and prevention (the BGs).

KAN thus contributes to a coherent and consistent body of regulation, which enhances the competitiveness and potential for innovation of German and European industry.

How does KAN function?

Based upon the broadest possible consensus among all the groups represented within it, KAN drafts recommendations and position statements on European and international standardization policy and on current and planned standardization projects, in the following areas among others:



- safety of machinery and electrical equipment;
- biological, chemical and physical hazards;
- ergonomics and work organization;
- personal protective equipment.

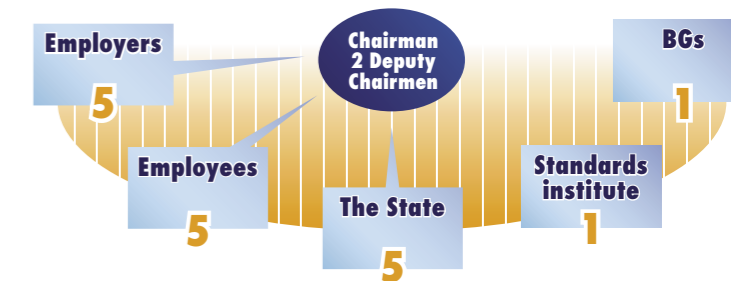
To this end, KAN:

- plans and supports studies analyzing areas of standardization, and evaluates the results;
- analyzes standards from an OH&S perspective, and identifies needs for amendments;
- maintains close contact with OH&S experts at national, European and international level;
- holds events for the pooling of information and experience;
- provides up-to-date information in print and electronic publications: KAN Reports, **KAN**Brief, **KAN**MAIL, the KAN website at www.kan.de, and the NoRA standards research tool.

With these instruments, KAN supports its members in upholding their common OH&S interests within standardization.

How is KAN organized?

The Commission comprises five representatives each from employers' organizations, employees' organizations and the state, and one representative each from the industrial BGs and DIN Deutsches Institut für Normung e.V.



Responsibility for KAN lies with VFA, the Association for the Promotion of Occupational Safety in Europe. VFA is an association of the industrial BGs, the institutions for statutory accident insurance and prevention. The German government supports KAN financially in the form of project support.

Technical officers responsible for various specialist areas perform their duties at the KAN Secretariat. Special support is given to employers' and employees' bodies in the form of liaison offices within the Secretariat.